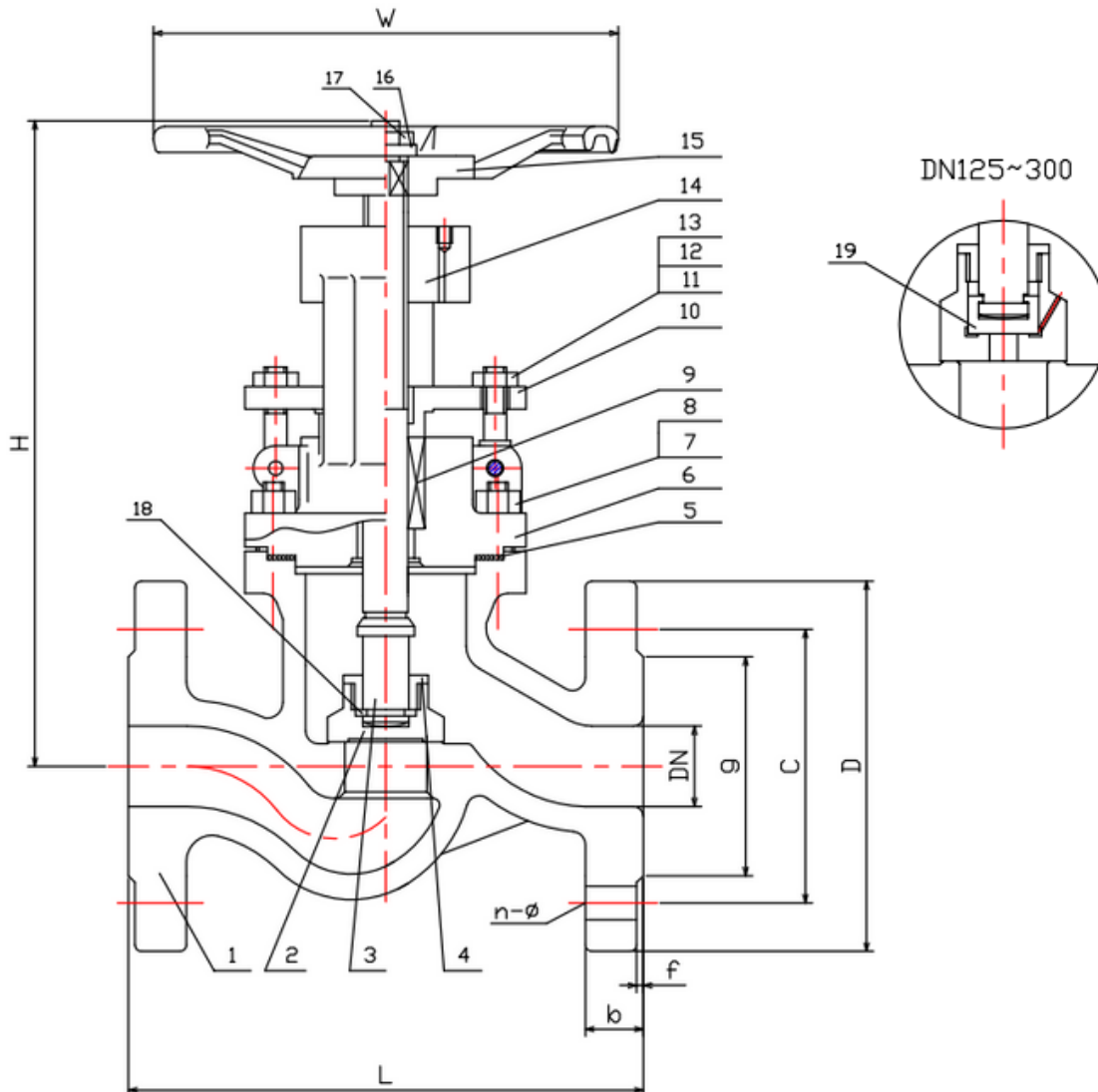


TYPE: DGV0110

DIN Absperrventil DN 15-300 PN10

DIN Globe Valve DN 15-300 PN10



Technical Specification:

1. Design and machining acc. EN13709
2. Inspection and test acc. EN12266-1
3. Face to Face acc. EN558-1 Gr.1
4. Dimension of connection end flange acc. EN1092-1

DRW Industrietechnik GmbH

Bodenschwinger Str. 125

D-44357 Dortmund

Telefon: +49 2 31 - 92 71 44-0

info@drw-armaturen.de

www.drw-armaturen.de



Abmessungen / Dimensions:

DN	L	g	C	D	b	f	n-ø	H	W
15	130	45	65	95	16	2	4-14	190	120
20	150	58	75	105	18	2	4-14	192	120
25	160	68	85	115	18	2	4-14	200	140
32	180	78	100	140	18	2	4-18	205	140
40	200	88	110	150	18	3	4-18	230	160
50	230	102	125	165	20	3	4-18	240	160
65	290	122	145	185	18	3	4-18	275	180
80	310	138	160	200	20	3	4-18	300	200
100	350	158	180	220	20	3	8-18	360	225
125	400	188	210	250	22	3	8-18	415	250
150	480	212	240	285	22	3	8-23	465	300
200	600	268	295	340	24	3	8-23	540	400
250	730	320	350	395	26	3	12-23	680	500
300	850	370	400	445	28	4	12-23	820	600

Materialien / Materials:

No.	Part Name	Material
1	Body	1.4308
2	Disc	1.4301
3	Stem	1.4301
4	Disc Gland	1.4301
5	Gasket	1.4301 + Graphite
6	Bonnet	1.4308
7	Studbolt	A2
8	Nut	A2
9	Gland Packing	Graphite
10	Gland Packing	1.4308
11	Studbolt	A2
12	Nut	A2
13	Pin	1.4301
14	Yoke Sleeve	GGG40
15	Hand Wheel	GGG40
16	Washer	1.4301
17	Lock Nut	1.4006
18	Ring	1.4301
19	Inner Disc	1.4301

DRW Industrietechnik GmbH

Bodenschwinger Str. 125

D-44357 Dortmund

Telefon: +49 2 31 - 92 71 44-0

info@drw-armaturen.de

www.drw-armaturen.de

