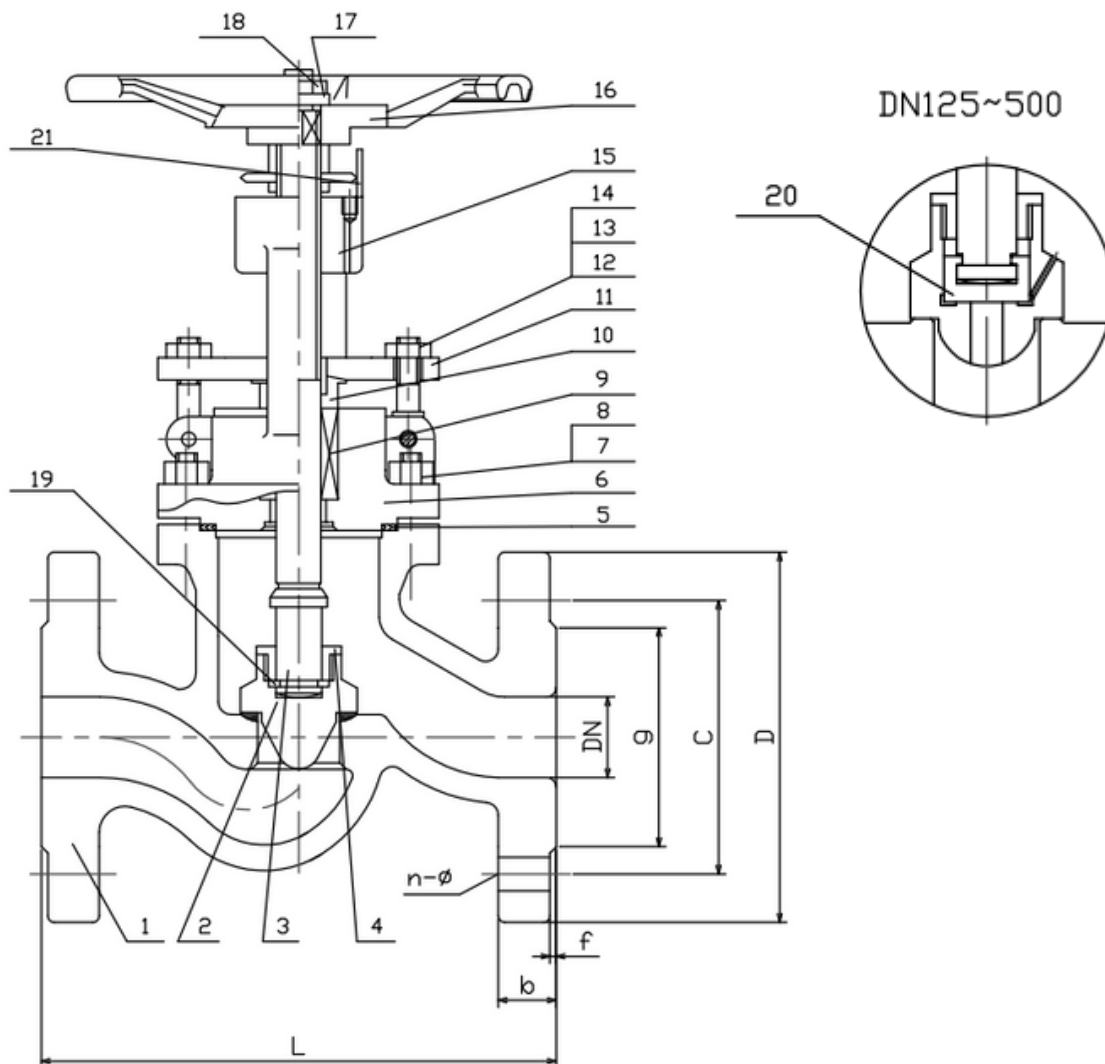


## TYPE: DGV0402

DIN Absperrventil DN 15-500 PN40

DIN Globe Valve DN 15-500 PN40



### Technical Specification:

1. Design and machining acc. EN13709
2. Inspection and test acc. EN12266-1
3. Face to Face acc. EN558-1 Gr.1
4. Dimension of connection end flange acc. EN1092-1 Type B1

### **DRW Industrietechnik GmbH**

Bodenschwinger Str. 125

D-44357 Dortmund

Telefon: +49 2 31 - 92 71 44-0

info@drw-armaturen.de

[www.drw-armaturen.de](http://www.drw-armaturen.de)



## Abmessungen / Dimensions:

DN	L	g	C	D	b	f	n-ø
15	130	45	65	95	16	2	4-14
20	150	58	75	105	18	2	4-14
25	160	68	85	115	18	2	4-14
32	180	78	100	140	18	2	4-18
40	200	88	110	150	18	3	4-18
50	230	102	125	165	20	3	4-18
65	290	122	145	185	22	3	8-18
80	310	138	160	200	24	3	8-18
100	350	162	195	235	24	3	8-22
125	400	188	220	270	26	3	8-26
150	480	218	250	300	28	3	8-26
200	600	285	320	375	34	3	12-30
250	730	345	385	450	38	3	12-33
300	850	410	450	515	42	4	16-33
350	980	465	510	580	46	4	16-36
400	1100	535	585	660	50	4	16-39
500	1250	615	670	755	52	4	20-42

## Materialien / Materials:

No.	Part Name	Material
1	Body	1.0619 + 13 Cr
2	Disc	1.4006
3	Stem	1.4006
4	Disc Gland	1.4006
5	Gasket	1.4301 + Graphite
6	Bonnet	1.0619
7	Studbolt	G
8	Nut	YK
9	Gland Packing	Graphite
10	Gland Follower	1.4006
11	Gland Forging	1.0619
12	Studbolt	G
13	Nut	YK
14	Pin	1.0501
15	Yoke Sleeve	GGG40
16	Hand Wheel	GGG40
17	Washer	1.0501
18	Lock Nut	YK
19	Ring	1.4006
20	Inner Disc	1.4006
21	Indicator	C22.8

### **DRW Industrietechnik GmbH**

Bodenschwinger Str. 125

D-44357 Dortmund

Telefon: +49 2 31 - 92 71 44-0

info@drw-armaturen.de

[www.drw-armaturen.de](http://www.drw-armaturen.de)

