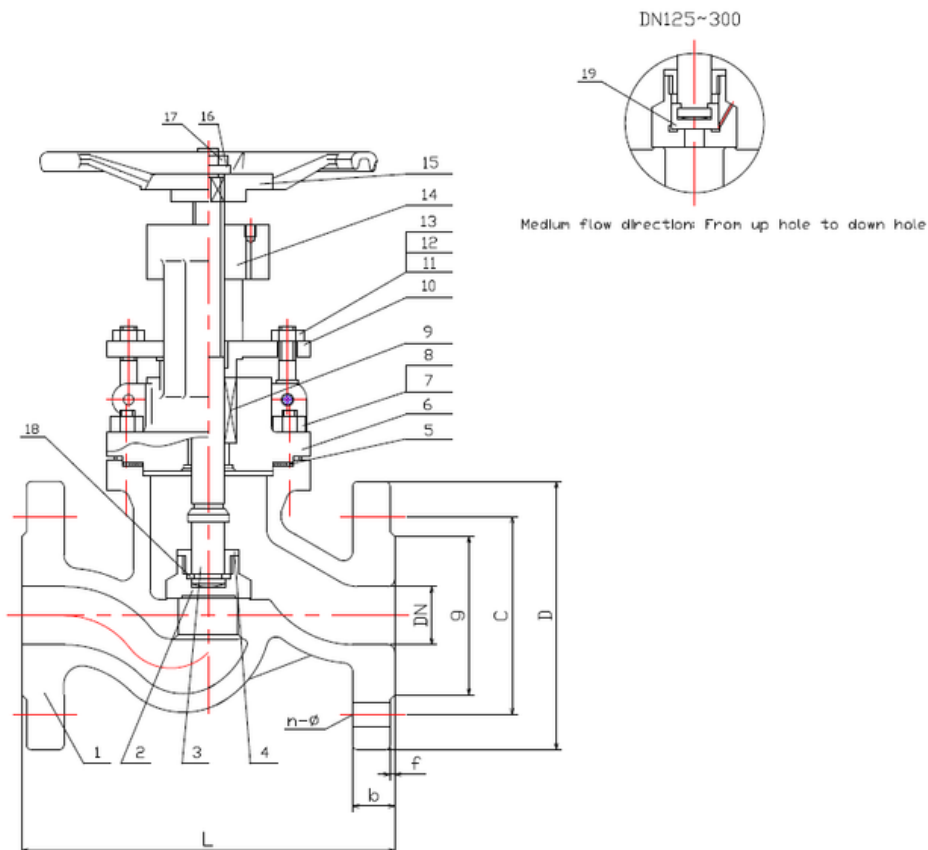


## TYPE: DGV0409

Absperrventil DN15 - DN300, PN40

Globe Valve DN15 - DN300, PN40



### Technical Specification:

1. Design and machining in accordance with EN13709
2. Inspection and test in accordance with EN12266-1
3. Face to Face dimension in accordance with EN558-1 Gr.1
4. Dimension of connection end accordance with EN1092-1 Type B1

### **DRW Industrietechnik GmbH**

Bodenschwinger Str. 125

D-44357 Dortmund

Telefon: +49 2 31 - 92 71 44-0

info@drw-armaturen.de

[www.drw-armaturen.de](http://www.drw-armaturen.de)



## Abmessungen / Dimensions:

DN	L	g	C	D	b	f	n-ø
15	130	45	65	95	16	2	4-14
20	150	58	75	105	18	2	4-14
25	160	68	85	115	18	2	4-14
32	180	78	100	140	18	2	4-18
40	200	88	110	150	18	3	4-18
50	230	102	125	165	20	3	4-18
65	290	122	145	185	22	3	8-18
80	310	138	160	200	24	3	8-18
100	350	162	190	235	24	3	8-22
125	400	188	220	270	26	3	8-26
150	480	218	250	300	28	3	8-26
200	600	285	320	375	34	3	12-30
250	730	345	385	450	38	3	12-33
300	850	410	450	515	42	4	16-33

## Materialien / Materials:

No.	Part Name	Material
1	Body	1.4408
2	Disc	1.4401
3	Stem	1.4401
4	Disc Gland	1.4401
5	Gasket	1.4401+Graphite
6	Bonnet	1.4408
7	Studbolt	A4
8	Nut	A4
9	Gland Packing	Graphite
10	Gland Forging	1.4408
11	Studbolt	A4
12	Nut	A4
13	Pin	1.4006
14	Yoke Sleeve	GGG40
15	Hand Wheel	GGG40
16	Washer	1.4301
17	Lock Nut	1.4006
18	Ring	1.4301
19	Inner Disc	1.4301

### **DRW Industrietechnik GmbH**

Bodenschwinger Str. 125

D-44357 Dortmund

Telefon: +49 2 31 - 92 71 44-0

info@drw-armaturen.de

[www.drw-armaturen.de](http://www.drw-armaturen.de)

