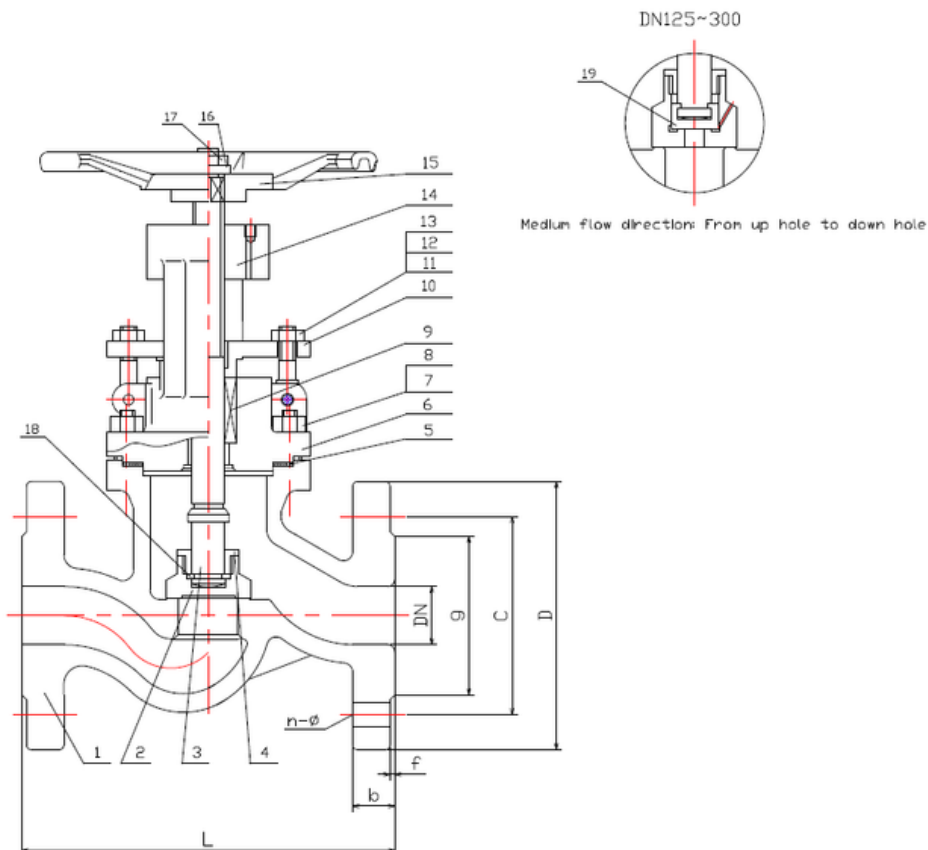


TYPE: DGV0509

Absperrventil DN15 - DN300, PN63

Globe Valve DN15 - DN300, PN63



Technical Specification:

1. Design and machining in accordance with EN13709
2. Inspection and test in accordance with EN12266-1
3. Face to Face dimension in accordance with EN558-1 Gr.1
4. Dimension of connection end accordance with EN1092-1 Type B1

DRW Industrietechnik GmbH

Bodenschwinger Str. 125

D-44357 Dortmund

Telefon: +49 2 31 - 92 71 44-0

info@drw-armaturen.de

www.drw-armaturen.de



Abmessungen / Dimensions:

DN	L	g	C	D	b	f	n-ø	H	W
15	210	45	75	105	20	2	4-14	130	150
25	230	68	100	140	24	2	4-18	220	180
40	260	88	125	170	28	3	4-22	260	200
50	300	102	135	180	26	3	4-22	299	250
65	340	122	160	205	26	3	8-22	331	250
80	380	138	170	215	28	3	8-22	350	350
100	430	162	200	250	30	3	8-26	400	400
125	500	188	240	295	34	3	8-30	460	400
150	550	218	280	345	36	3	8-33	540	500
200	650	285	345	415	42	3	12-36	550	550
250	775	345	400	470	46	3	12-36	780	600
300	900	410	460	530	52	4	16-36	980	650

Materialien / Materials:

No.	Part Name	Material
1	Body	1.4408
2	Disc	1.4401
3	Stem	1.4401
4	Disc Gland	1.4401
5	Gasket	1.4401+Graphite
6	Bonnet	1.4408
7	Studbolt	A4
8	Nut	A4
9	Gland Packing	Graphite
10	Gland Forging	1.4408
11	Studbolt	A4
12	Nut	A4
13	Pin	1.4006
14	Yoke Sleeve	GGG40
15	Hand Wheel	GGG40
16	Washer	1.4301
17	Lock Nut	1.4006
18	Ring	1.4301
19	Inner Disc	1.4301

DRW Industrietechnik GmbH

Bodenschwinger Str. 125

D-44357 Dortmund

Telefon: +49 2 31 - 92 71 44-0

info@drw-armaturen.de

www.drw-armaturen.de

