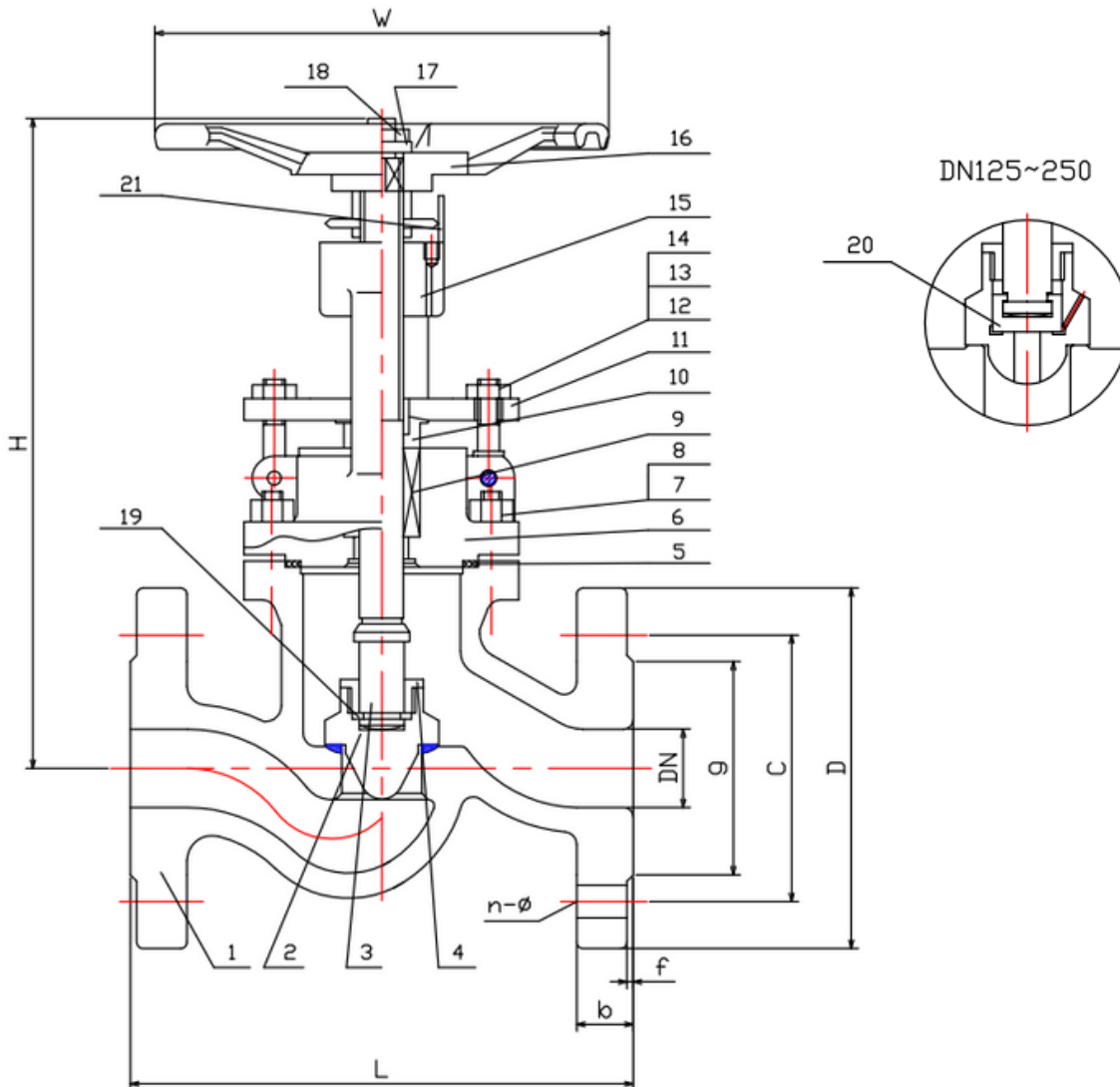


TYPE: DGV0202

DIN Absperrventil DN 15-250 PN16

DIN Globe Valve DN 15-250 PN16



Technical Specification:

1. Design and machining acc. EN13709
2. Inspection and test acc. EN12266-1
3. Face to Face acc. DIN3202-F1
4. Dimension of connection end flange acc. EN1092-1
5. TA-Luft VDI2440

DRW Industrietechnik GmbH

Bodenschwinger Str. 125

D-44357 Dortmund

Telefon: +49 2 31 - 92 71 44-0

info@drw-armaturen.de

www.drw-armaturen.de



Abmessungen / Dimensions:

DN	L	g	C	D	b	f	n-ø	H	W
15	130	45	65	95	16	2	4-14	190	120
20	150	58	75	105	18	2	4-14	192	120
25	160	68	85	115	18	2	4-14	200	140
32	180	78	100	140	18	2	4-18	205	140
40	200	88	110	150	18	3	4-18	230	160
50	230	102	125	165	20	3	4-18	240	160
65	290	122	145	185	18	3	4-18	275	180
80	310	138	160	200	20	3	8-18	300	200
100	350	158	180	220	20	3	8-18	360	225
125	400	188	210	250	22	3	8-18	415	250
150	480	212	240	285	22	3	8-22	465	300
200	600	268	295	340	24	3	12-22	540	400
250	730	320	355	405	26	3	12-26	680	500

Materialien / Materials:

No.	Part Name	Material
1	Body	1.0619 + 13 Cr
2	Disc	1.4006
3	Stem	1.4006
4	Disc Gland	1.4006
5	Gasket	1.4301 + Graphite
6	Bonnet	1.0619
7	Studbolt	G
8	Nut	YK
9	Gland Packing	Graphite
10	Gland Follower	1.4006
11	Gland Forging	1.0619
12	Studbolt	G
13	Nut	YK
14	Pin	1.0501
15	Yoke Sleeve	GGG40
16	Hand Wheel	GGG40
17	Washer	1.0501
18	Lock Nut	YK
19	Ring	1.4006
20	Inner Disc	1.4006
21	Indicator	C22.8

DRW Industrietechnik GmbH

Bodenschwinger Str. 125

D-44357 Dortmund

Telefon: +49 2 31 - 92 71 44-0

info@drw-armaturen.de

www.drw-armaturen.de

