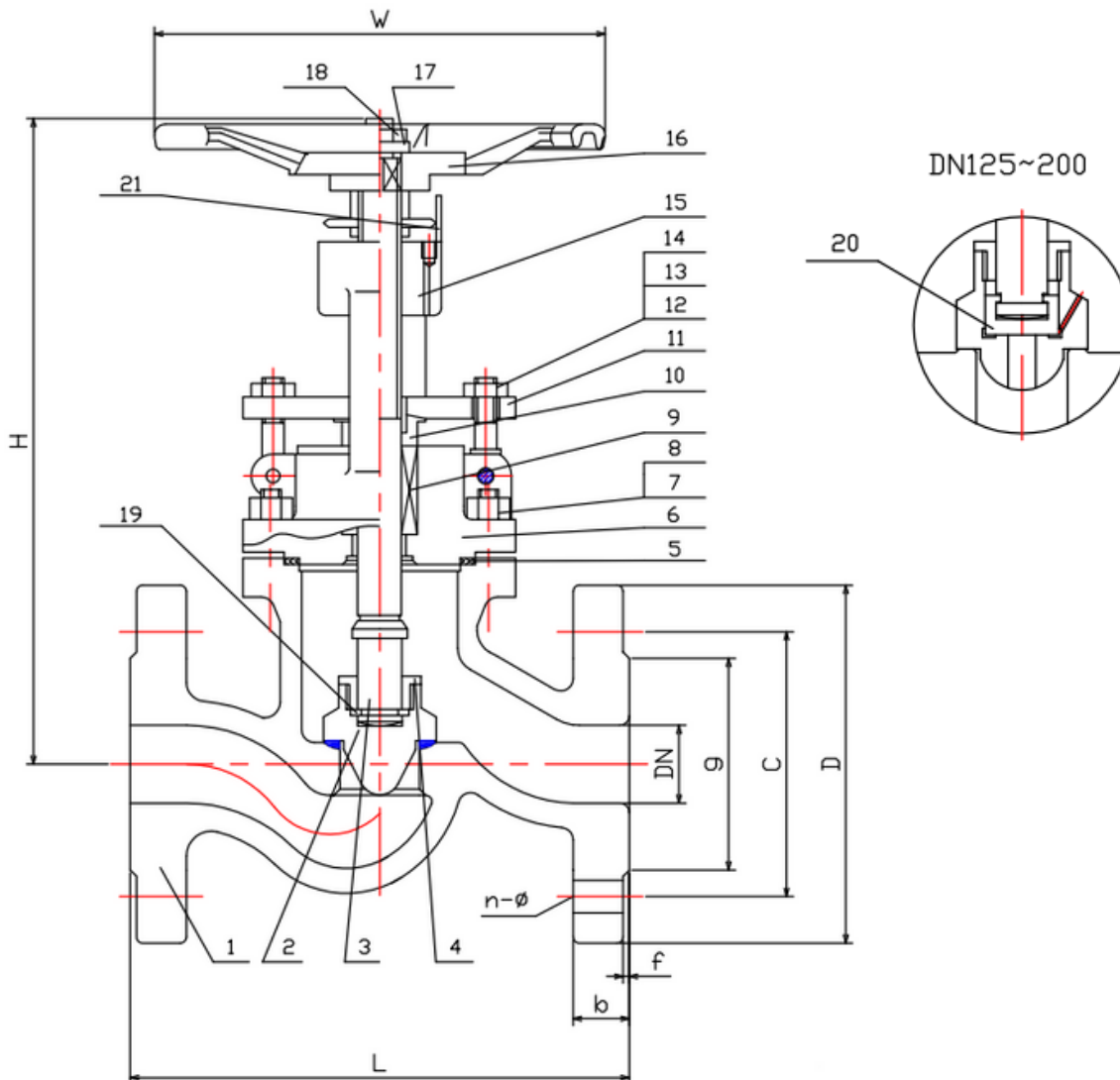


TYPE: DGV0302

DIN Absperrventil DN 15-300 PN25

DIN Globe Valve DN 15-300 PN25



Technical Specification:

1. Design and machining acc. EN13709
2. Inspection and test acc. EN12266-1
3. Face to Face acc. DIN3202-F1
4. Dimension of connection end flange acc. EN1092-1
5. TA-Luft VDI2440

DRW Industrietechnik GmbH

Bodenschwinger Str. 125

D-44357 Dortmund

Telefon: +49 2 31 - 92 71 44-0

info@drw-armaturen.de

www.drw-armaturen.de



Abmessungen / Dimensions:

DN	L	g	C	D	b	f	n-ø
15	130	45	65	95	16	2	4-14
20	150	58	75	105	18	2	4-14
25	160	68	85	115	18	2	4-14
32	180	78	100	140	18	2	4-18
40	200	88	110	150	18	3	4-18
50	230	102	125	165	20	3	4-18
65	290	122	145	185	22	3	8-18
80	310	138	160	200	24	3	8-18
100	350	162	195	235	24	3	8-22
125	400	188	220	270	26	3	8-26
150	480	218	250	300	28	3	8-26
200	600	278	310	360	30	3	12-26
250	730	335	370	425	32	3	12-30
300	850	395	430	485	34	4	16-30

Materialien / Materials:

No.	Part Name	Material
1	Body	1.0619 + 13 Cr
2	Disc	1.4006
3	Stem	1.4006
4	Disc Gland	1.4006
5	Gasket	1.4301 + Graphite
6	Bonnet	1.0619
7	Studbolt	G
8	Nut	YK
9	Gland Packing	Graphite
10	Gland Follower	1.4006
11	Gland Forging	1.0619
12	Studbolt	G
13	Nut	YK
14	Pin	1.0501
15	Yoke Sleeve	GGG40
16	Hand Wheel	GGG40
17	Washer	1.0501
18	Lock Nut	YK
19	Ring	1.4006
20	Inner Disc	1.4006
21	Indicator	C22.8

DRW Industrietechnik GmbH

Bodenschwinger Str. 125

D-44357 Dortmund

Telefon: +49 2 31 - 92 71 44-0

info@drw-armaturen.de

www.drw-armaturen.de

