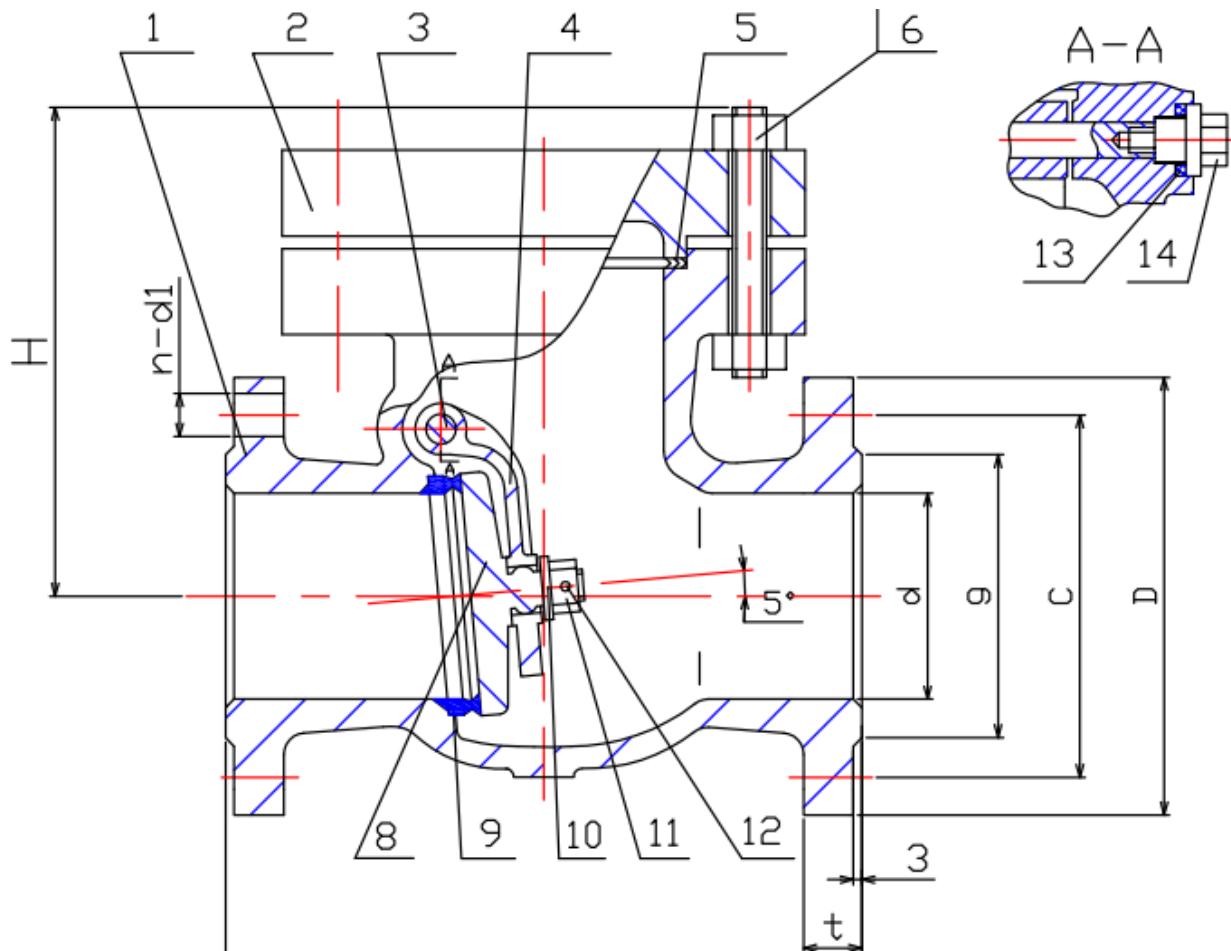


TYPE: DRK0509

DIN Rückschlagklappe DN50 - DN150 PN63

DIN Swing Check Valve DN50 - DN150 PN63



Technical Specification:

1. Design and machining acc. with EN14341
2. Inspection and test acc. EN12266
3. Face to Face acc. DIN3202-F2
4. Dimension of connection end flange acc. DIN2546

DRW Industrietechnik GmbH

Bodenschwinger Str. 125

D-44357 Dortmund

Telefon: +49 2 31 - 92 71 44-0

info@drw-armaturen.de

www.drw-armaturen.de



Abmessungen / Dimensions:

| DN | L | g | C | D | t | H | n-ø |
|-----|-----|-----|-----|-----|----|-----|------|
| 50 | 300 | 102 | 135 | 180 | 26 | 180 | 4-22 |
| 65 | 340 | 122 | 160 | 205 | 26 | 205 | 8-22 |
| 80 | 380 | 138 | 170 | 215 | 28 | 210 | 8-22 |
| 100 | 430 | 162 | 200 | 250 | 30 | 130 | 8-26 |
| 150 | 550 | 218 | 280 | 345 | 36 | 275 | 8-33 |

Materialien / Materials:

| No. | Part Name | Material |
|-----|--------------|-------------------|
| 1 | Body | 1.4408 |
| 2 | Bonnet | 1.4408 |
| 3 | Hinge Pin | 1.4401 |
| 4 | Rocker | 1.4408 |
| 5 | Gasket | 1.4401 + Graphite |
| 6 | Studbolt | A4 |
| 7 | Nut | A4 |
| 8 | Disc | 1-4408 |
| 9 | Seat Ring | 1.4404 + STL |
| 10 | Washer | 1.4401 |
| 11 | Nut | 1.4401 |
| 12 | Pin | 1.4401 |
| 13 | Gasket | 1.4404 |
| 14 | Bolt Stopper | 1.4401 |

DRW Industrietechnik GmbH

Bodenschwinger Str. 125

D-44357 Dortmund

Telefon: +49 2 31 - 92 71 44-0

info@drw-armaturen.de

www.drw-armaturen.de

