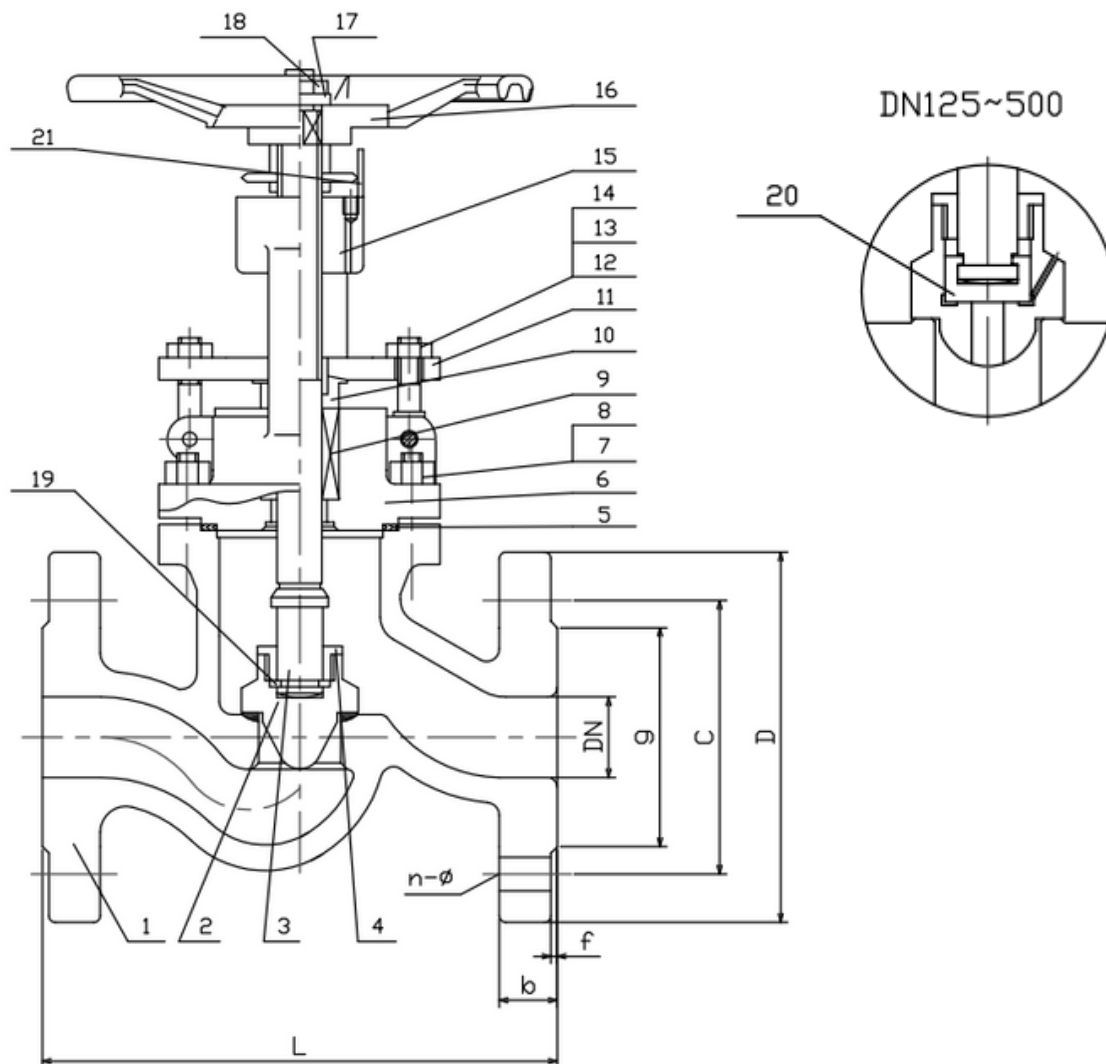


TYPE: DGV0402

DIN Absperrventil DN 15-500 PN40

DIN Globe Valve DN 15-500 PN40



Technical Specification:

1. Design and machining acc. EN13709
2. Inspection and test acc. EN12266-1
3. Face to Face acc. EN558-1 Gr.1
4. Dimension of connection end flange acc. EN1092-1 Type B1

DRW Industrietechnik GmbH

Bodenschwinger Str. 125

D-44357 Dortmund

Telefon: +49 2 31 - 92 71 44-0

info@drw-armaturen.de

www.drw-armaturen.de



Abmessungen / Dimensions:

DN	L	g	C	D	b	f	n-ø
15	130	45	65	95	16	2	4-14
20	150	58	75	105	18	2	4-14
25	160	68	85	115	18	2	4-14
32	180	78	100	140	18	2	4-18
40	200	88	110	150	18	3	4-18
50	230	102	125	165	20	3	4-18
65	290	122	145	185	22	3	8-18
80	310	138	160	200	24	3	8-18
100	350	162	195	235	24	3	8-22
125	400	188	220	270	26	3	8-26
150	480	218	250	300	28	3	8-26
200	600	285	320	375	34	3	12-30
250	730	345	385	450	38	3	12-33
300	850	410	450	515	42	4	16-33
350	980	465	510	580	46	4	16-36
400	1100	535	585	660	50	4	16-39
500	1250	615	670	755	52	4	20-42

Materialien / Materials:

No.	Part Name	Material
1	Body	1.0619 + STL
2	Disc	1.4401
3	Stem	1.4401
4	Disc Gland	1.4401
5	Gasket	1.4401 + Graphite
6	Bonnet	1.0619
7	Studbolt	YK
8	Nut	YK
9	Gland Packing	Graphite
10	Gland Follower	1.4401
11	Gland Forging	1.0619
12	Studbolt	YK
13	Nut	YK
14	Pin	1.0501
15	Yoke Sleeve	GGG40
16	Hand Wheel	GGG40
17	Washer	1.0501
18	Lock Nut	1.0501
19	Ring	1.4001
20	Inner Disc	1.4001
21	Indicator	1.4301

DRW Industrietechnik GmbH

Bodenschwinger Str. 125

D-44357 Dortmund

Telefon: +49 2 31 - 92 71 44-0

info@drw-armaturen.de

www.drw-armaturen.de

