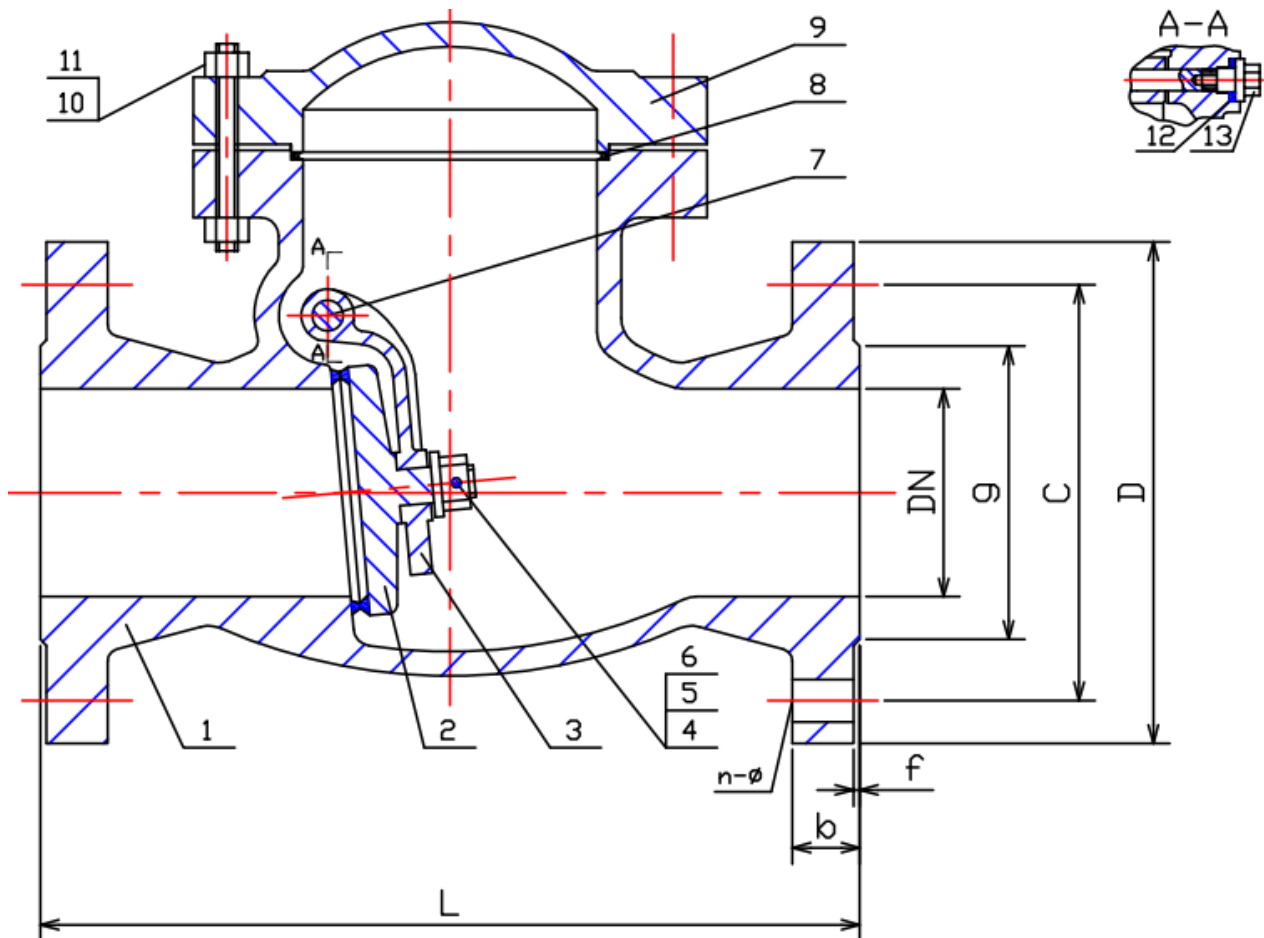


TYPE: DRK0402

DIN Rückschlagklappe DN50 - DN500 PN40

DIN Swing Check Valve DN50 - DN500 PN40



Technical Specification:

1. Design and machining acc. with EN14341
2. Inspection and test acc. EN12266-1
3. Face to Face acc. DIN3202-F1 (EN558-1 Gr 1)
4. Dimension of connection end flange acc. EN1092-1

DRW Industrietechnik GmbH

Bodenschwinger Str. 125

D-44357 Dortmund

Telefon: +49 2 31 - 92 71 44-0

info@drw-armaturen.de

www.drw-armaturen.de



Abmessungen / Dimensions:

DN	L	g	C	D	b	f	n-ø
50	230	102	125	165	20	3	4-18
65	290	122	145	185	22	3	8-18
80	310	138	160	200	24	3	8-18
100	350	162	190	235	24	3	8-22
125	400	188	220	270	26	3	8-26
150	480	218	250	300	28	3	8-26
200	600	285	320	375	34	3	12-30
250	730	345	385	450	38	3	12-33
300	850	410	450	510	42	4	16-33
350	980	465	510	580	46	4	16-36
400	1100	535	585	660	50	4	16-39
500	1250	615	670	755	52	4	20-42

Materialien / Materials:

No.	Part Name	Material
1	Body	1.0619 + 13 CR
2	Disc	1.0619 + 13 CR
3	Rocker	1.0619
4	Washer 1	1.4301
5	Nut	1.4301
6	Pin	1.4301
7	Hing Pin	1.43006
8	Gasket	1.4301 + Graphite
9	Bonnet	1.0619
10	Studbolt	YK
11	Nut	YK
12	Washer 2	1.4404
13	Plug Nut	1.0460

DRW Industrietechnik GmbH

Bodenschwinger Str. 125

D-44357 Dortmund

Telefon: +49 2 31 - 92 71 44-0

info@drw-armaturen.de

www.drw-armaturen.de

