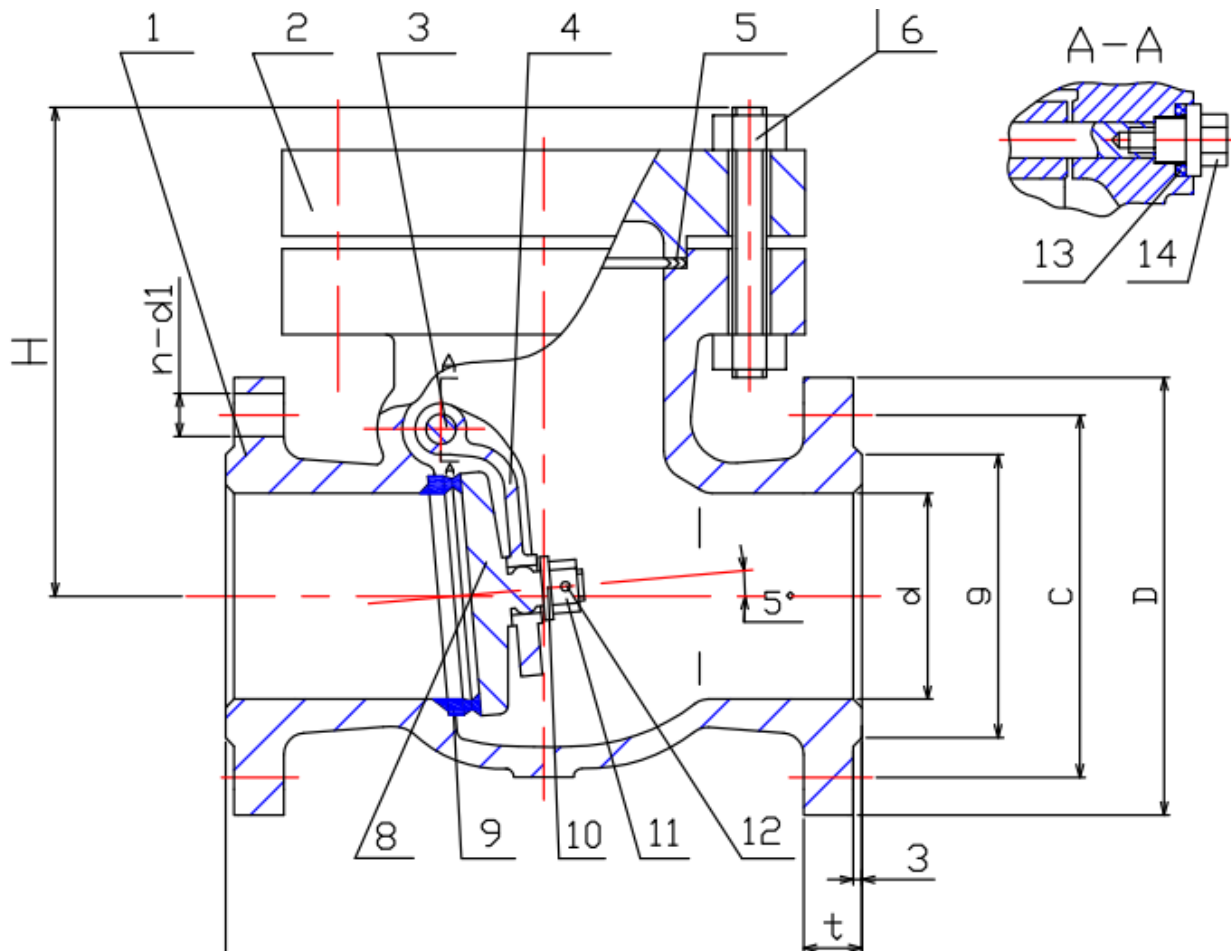


TYPE: DRK0509

DIN Rückschlagklappe DN50 - DN150 PN63

DIN Swing Check Valve DN50 - DN150 PN63



Technical Specification:

1. Design and machining acc. with EN14341
2. Inspection and test acc. EN12266
3. Face to Face acc. DIN3202-F2 (Gr. 2)
4. Dimension of connection end flange acc. DIN2546

DRW Industrietechnik GmbH

Bodelschwingher Str. 125

D-44357 Dortmund

Telefon: +49 2 31 - 92 71 44-0

info@drw-armaturen.de

www.drw-armaturen.de



Abmessungen / Dimensions:

DN	L	g	C	D	t	H	n-ø
50	300	102	135	180	26	180	4-22
65	340	122	160	205	26	205	8-22
80	380	138	170	215	28	210	8-22
100	430	162	200	250	30	130	8-26
150	550	218	280	345	36	275	8-33

Materialien / Materials:

No.	Part Name	Material
1	Body	1.4408
2	Bonnet	1.4408
3	Hinge Pin	1.4401
4	Rocker	1.4408
5	Gasket	1.4401 + Graphite
6	Studbolt	A4
7	Nut	A4
8	Disc	1-4408
9	Seat Ring	1.4404 + STL
10	Washer	1.4401
11	Nut	1.4401
12	Pin	1.4401
13	Gasket	1.4404
14	Bolt Stopper	1.4401

DRW Industrietechnik GmbH

Bodenschwinger Str. 125

D-44357 Dortmund

Telefon: +49 2 31 - 92 71 44-0

info@drw-armaturen.de

www.drw-armaturen.de

