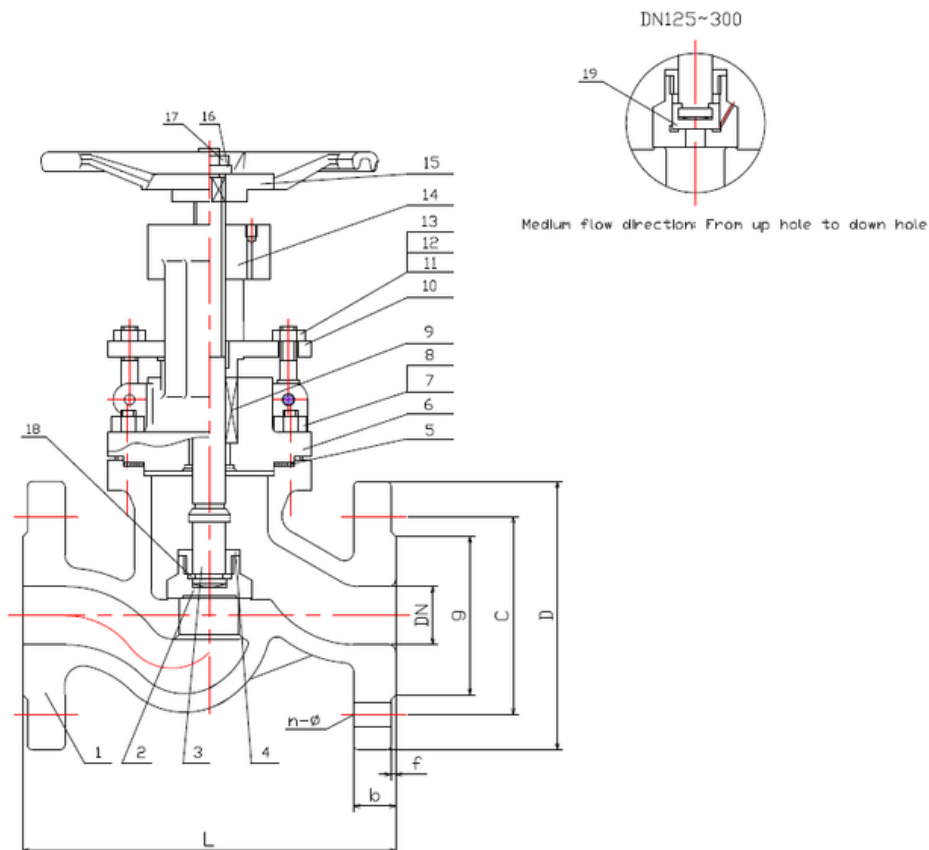


## TYPE: DGV0202

Absperrventil DN15 - DN300, PN16

Globe Valve DN15 - DN300, PN16



### Technical Specification:

1. Design and machining in accordance with EN13709
2. Inspection and test in accordance with EN12266-1
3. Face to Face dimension in accordance with EN558-1 Gr.1
4. Dimension of connection end accordance with EN1092-1 Type B1

### **DRW Industrietechnik GmbH**

Bodenschwinger Str. 125

D-44357 Dortmund

Telefon: +49 2 31 - 92 71 44-0

info@drw-armaturen.de

[www.drw-armaturen.de](http://www.drw-armaturen.de)



## Abmessungen / Dimensions:

DN	L	g	C	D	b	f	n-ø
15	130	45	65	95	16	2	4-14
20	150	58	75	105	18	2	4-14
25	160	68	85	115	18	2	4-14
32	180	78	100	140	18	2	4-18
40	200	88	110	150	18	3	4-18
50	230	102	125	165	20	3	4-18
65	290	122	145	185	18	3	4-18
80	310	138	160	200	20	3	8-18
100	350	158	180	220	20	3	8-18
125	400	188	210	250	22	3	8-18
150	480	212	240	285	22	3	8-22
200	600	268	295	340	24	3	12-22
250	730	320	355	405	26	3	12-26
300	850	378	410	460	28	4	12-26

## Materialien / Materials:

No.	Part Name	Material
1	Body	1.0619+13%Cr
2	Disc	1.4006
3	Stem	1.4006
4	Disc Gland	1.4006
5	Gasket	1.4301+Graphite
6	Bonnet	1.069
7	Studbolt	YK
8	Nut	YK
9	Gland Packing	Graphite
10	Gland Follower	1.4006
11	Gland Forging	1.0619
12	Studbolt	YK
13	Nut	YK
14	Pin	1.0501
15	Yoke Sleeve	GGG40
16	Hand Wheel	GGG40
17	Washer	1.0501
18	Lock Nut	YK
19	Ring	1.4006

### **DRW Industrietechnik GmbH**

Bodenschwinger Str. 125

D-44357 Dortmund

Telefon: +49 2 31 - 92 71 44-0

info@drw-armaturen.de

[www.drw-armaturen.de](http://www.drw-armaturen.de)

