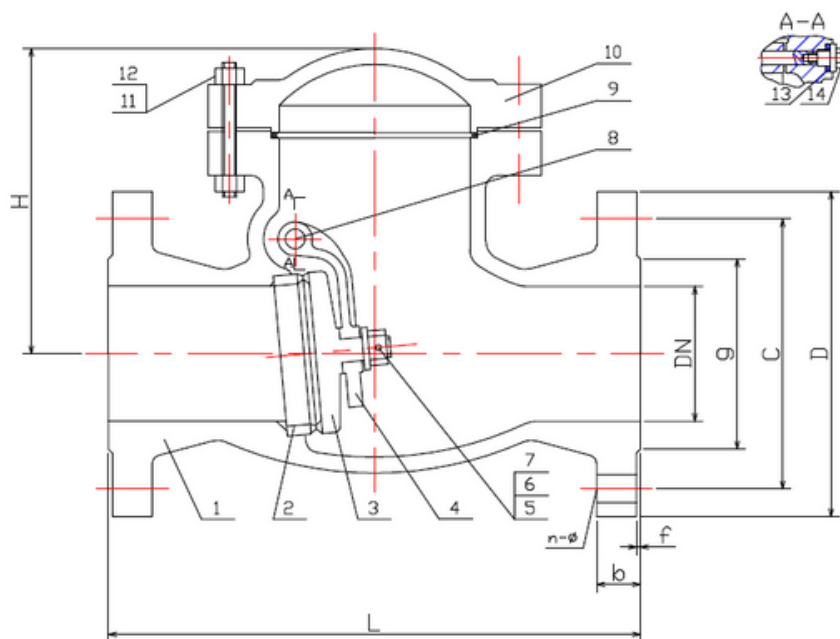


TYPE: DRK0402

Rückschlagklappe DN50 - DN300, PN40

Swing Check Valve DN50 - DN300, PN40



Technical Specification:

1. Design and machining in accordance with EN14341
2. Inspection and test in accordance with EN12266
3. Face to Face dimension in accordance with DIN3202-F1
4. Dimension of connection end accordance with EN1092-1

DRW Industrietechnik GmbH

Bodenschwinger Str. 125

D-44357 Dortmund

Telefon: +49 2 31 - 92 71 44-0

info@drw-armaturen.de

www.drw-armaturen.de



Abmessungen / Dimensions:

DN	L	g	C	D	b	n-ø	f	H
50	230	102	125	165	20	4-18	3	160
65	290	122	145	185	22	8-18	3	175
80	310	138	160	200	24	8-18	3	190
100	350	162	190	235	24	8-22	3	220
150	480	218	250	300	28	8-26	3	260
200	600	285	320	375	34	12-30	3	350
250	730	345	385	450	38	12-33	3	370
300	850	410	450	515	42	16-33	4	440

Materialien / Materials:

No.	Part Name	Material
1	Body	1.0619
2	Seat Ring	C22.8+13%Cr
3	Disc	1.0619+13%Cr
4	Rocker	1.0619
5	Washer 1	1.4006
6	Nut	1.4006
7	Pin	1.4006
8	Hing Pin	1.4006
9	Gasket	1.4301+Graphite
10	Bonnet	1.0619
11	Studbolt	YK
12	Nut	YK
13	Washer 2	1.4404
14	Plug Nut	1.4006

DRW Industrietechnik GmbH

Bodenschwinger Str. 125

D-44357 Dortmund

Telefon: +49 2 31 - 92 71 44-0

info@drw-armaturen.de

www.drw-armaturen.de

